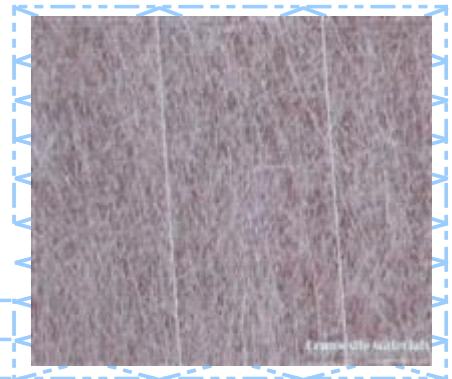


# Lijian Composite Materials Co.,LTD.

www.fiberglass-mat.com-Sale@fiberglass-mat.com-Tel :+86-13776546919-Fax:+86-25-68923190

## Glass Fiber Mat For Roofing System

- Substrate of APP or SBS modified bitumen membrane
- Substrat of Asphalt roofing shingles
- Substrate of Asphalt thruway



Serials-1

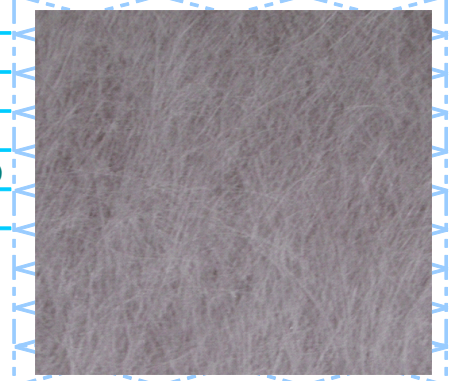
Serials-1	RM-45/T	RM-50/T	RM-60/T	RM-90/T
Serials-2	RM-50	RM-60	RM-90	

- Serials-1:We insert 68Tex fiber glass yarn in longitudinal to increase tensile strength based on Serials-2

Codes	Unit	RM-45/T	RM-50/T	RM-60/T	RM-90/T
Reinforcement Yarn	Tex			68	
Yarn space	mm			15	
Density	g/m2	45	50	60	90
LOI	%	16-25			
Tensile Strength MDXC	N/50mm	180 X 70	200 X 80	250 X 120	330 X 200
Roll Size W X L	m	1 X 3400	1 X 3200	1 X 2500	1 X 1500

- Serials-2:The Fiberglass mat is made by wet laid-up process,with 18 mm length and 13µm Dia. chop glass fiber

Codes	Unit	RM-50	RM-60	RM-90
Density	g/m2	50	60	90
LOI	%	16-25		
Tensile Strength MDXC	N/50mm	160 X 80	200 X 120	310 X 230
Roll Size W X L	m	1 X 3000	1 X 2400	1 X 1500



Serials-2

- Packages
- Method One  
Big rolls size,packed with renifored plastic film  
Core Dia.152.4mm  
Roll Dia.≤1209mm  
Loading(40'container)40 rolls on pallets
- Method Two  
Standard rolls size,packed with renifored plastic film  
Core Dia.152.4mm  
Roll Dia.≤1170mm  
Loading(40'container)44 rolls without pallets
- Method Three  
Small rolls size,packed with renifored plastic film  
Core Dia.76.2mm  
Roll Dia.≤760mm  
Loading(40'high container)114 rolls without pallets

### Important Notice

Loading(uploading)-Please do not drag and drop  
Please place in dry and shade  
Please do not open package before use

### Contact

Nanjing Lijian Composite Materials Co.,LTD.  
Tel:0086-25-68923190 0086-13776546919  
Fax:0086-25-68923190  
Web:www.fiberglass-mat.com  
E-mail:Sales@fiberglass-mat.com