

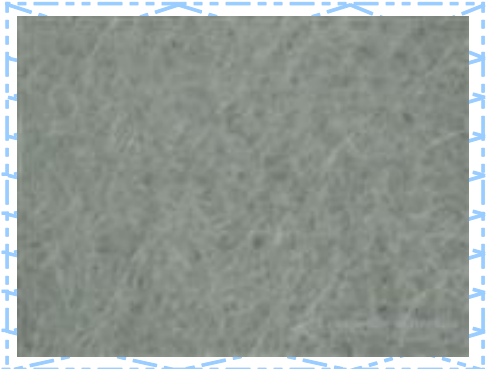
# Lijian Composite Materials Co.,LTD.

www.fiberglass-mat.com-Sale@fiberglass-mat.com-Tel :+86-13776546919-Fax:+86-25-68923190

## Glass Fiber Needle Mat

- Fiber Glass Needle Mat-Filtration and FRP process
- Composite Needle Mat-Filtration
- Synthetic Needle Mat-Filtration

Serials-1	FNM1050	FNM850		
Serials-2	EMNS300	EMNS450	EMNS760	EMNS910
	EMNC300	EMNC450	EMNC760	EMNC910
Serials-3	CNM1050	CNM850		
Serials-4	SNM500			



Serials-2

- Serials-1:Fiberglass Needle Mat For Filtration

Classification	Code	Mass g/m <sup>2</sup>	Tensile Strength		Permeability cm/s	Service Temperature °C	Recommended Air Flow m/min
			Warp N/50MM	Weft N/50MM			
Fiber Glass Needle Mat	FNM1050	1050	>1400	>1400	15-40	<280	<1.0
	FNM850	850	>1200	>1200	15-40	<280	<0.7

- Serials-2:Fiberglass Needle Mat For FRP process

Classifications	Codes	Density (g/m <sup>2</sup> )	Width (mm)	Moisture (%)	Roll Weight (kg)
Continuous Needle Mat	EMNS	300、450、 760、910	≥1040	≤0.3	15-25
Chopped Strand Needle Mat	EMNC	300、450、 760、911	≥1040	≤0.3	15-25

- Serials-3:Composite Needle Mat-Filtration

Classification	Code	Mass g/m <sup>2</sup>	Tensile Strength		Permeability cm/s	Service Temperature °C	Recommended Air Flow m/min
			Warp N/50MM	Weft N/50MM			
Composite Needle Mat	CNM1050	1050	>1400	>1400	15-45	<280	<1.2
	CNM850	850	>1300	>1200	15-40	<280	<0.8

- Serials-4:Synthetic Needle Mat-Filtration

Classification	Code	Mass g/m <sup>2</sup>	Tensile Strength		Permeability cm/s	Service Temperature °C	Recommended Air Flow m/min
			Warp N/50MM	Weft N/50MM			
Synthetic Needle Mat	SNM500	500	>1000	>1200	15-30	<190	<1.5

Nanjing Lijian Composite Materials Co.,LTD.

Tel:0086-25-68923190 0086-13776546919

Fax:0086-25-68923190

Web:www.fiberglass-mat.com

E-mail:Sales@fiberglass-mat.com

### Important Notice

Loading(uploading)-Please do not drag and drop

Please place in dry and shade

Please do not open package before use